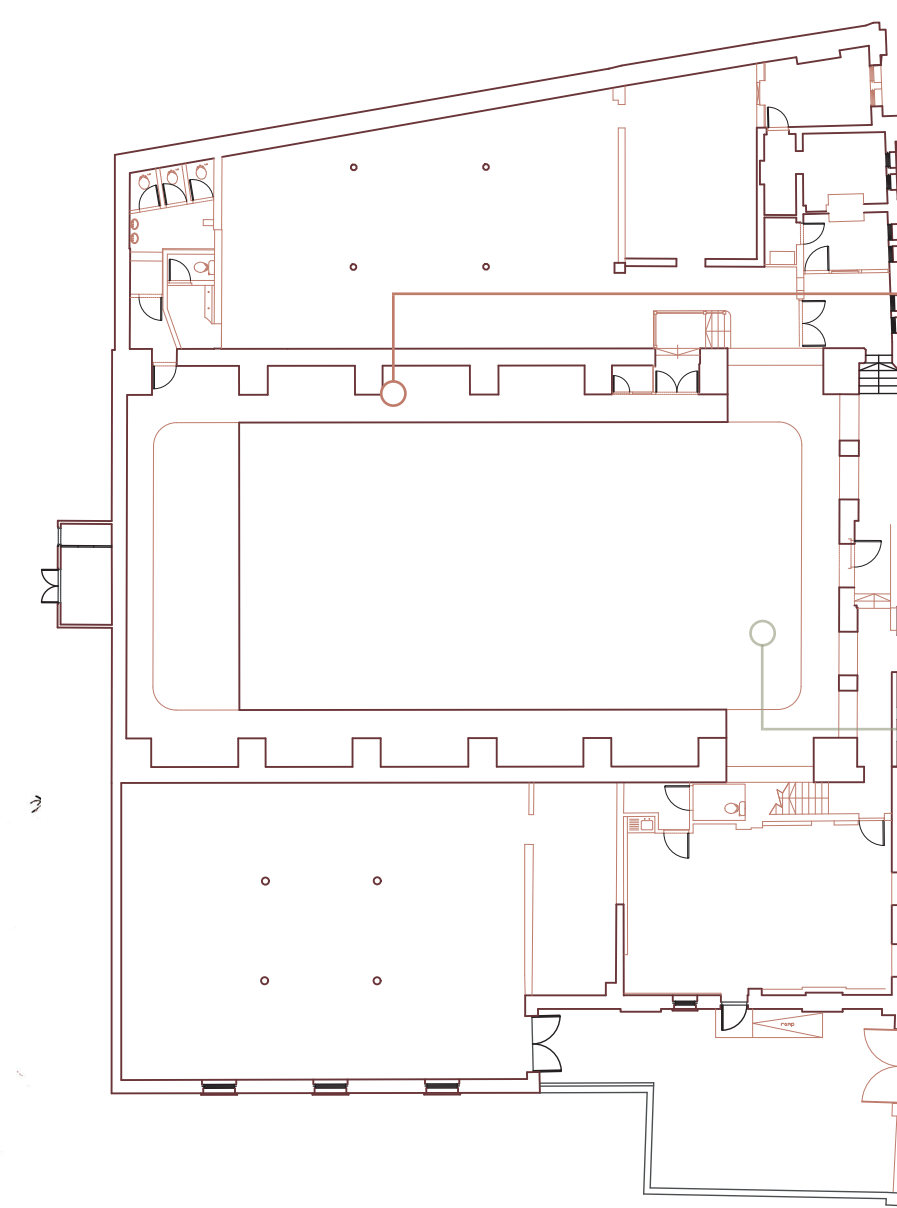
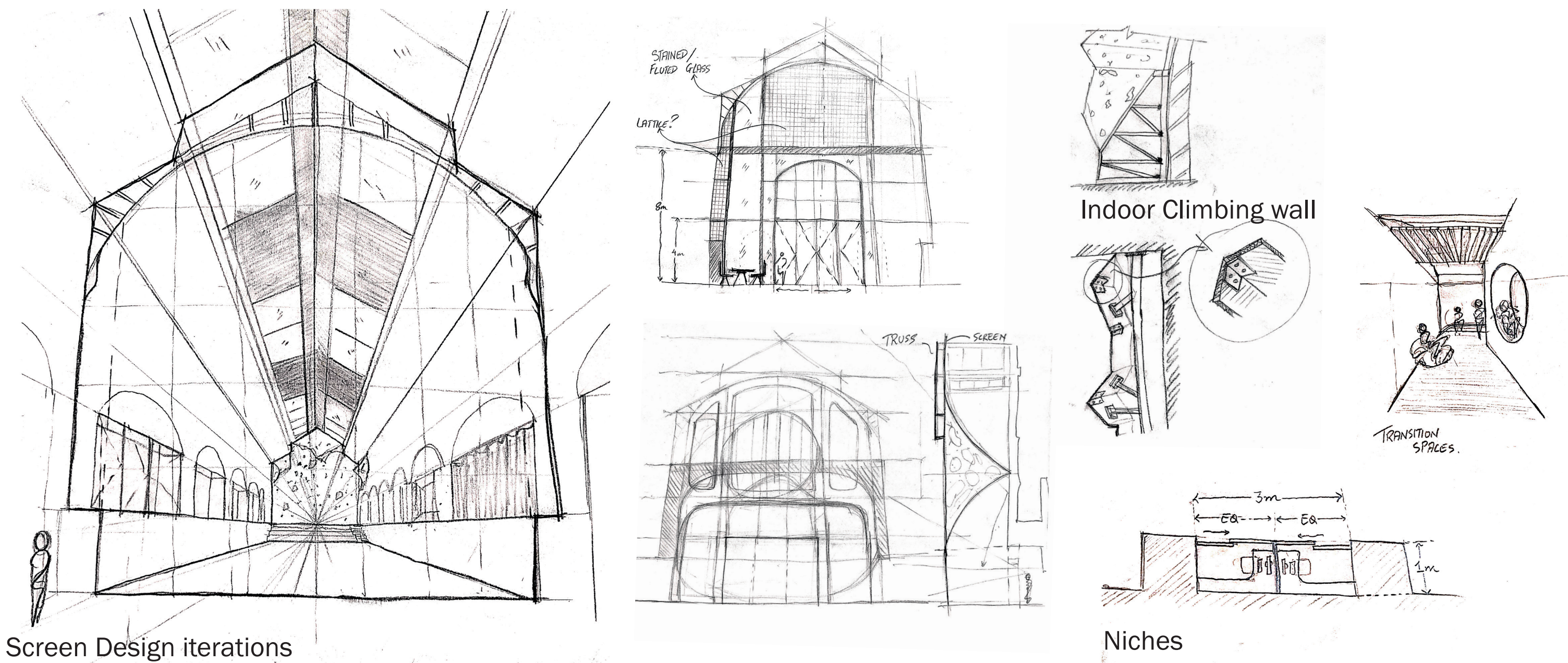


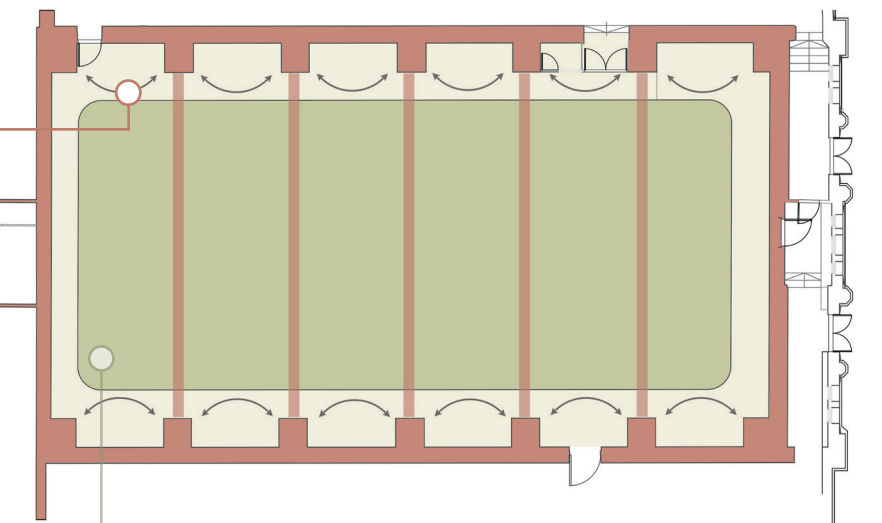
- Public Semi public (Revenue Generation)
- Youth only / Youth priority
- Vertical circulation
- Public Access
- Youth Access

## Access Strategy



Concealed brickwork and surviving arched bays are uncovered to re-establish the hall's original rhythm. The bays frame key views from café to climbing wall and become calm edge pockets for pause, break-out and personal use.

The pool hall's significance lies in its lantern-lit volume and bathing traces. Levelling to the pool's deepest datum restores the full spatial reading and supports everyday access.



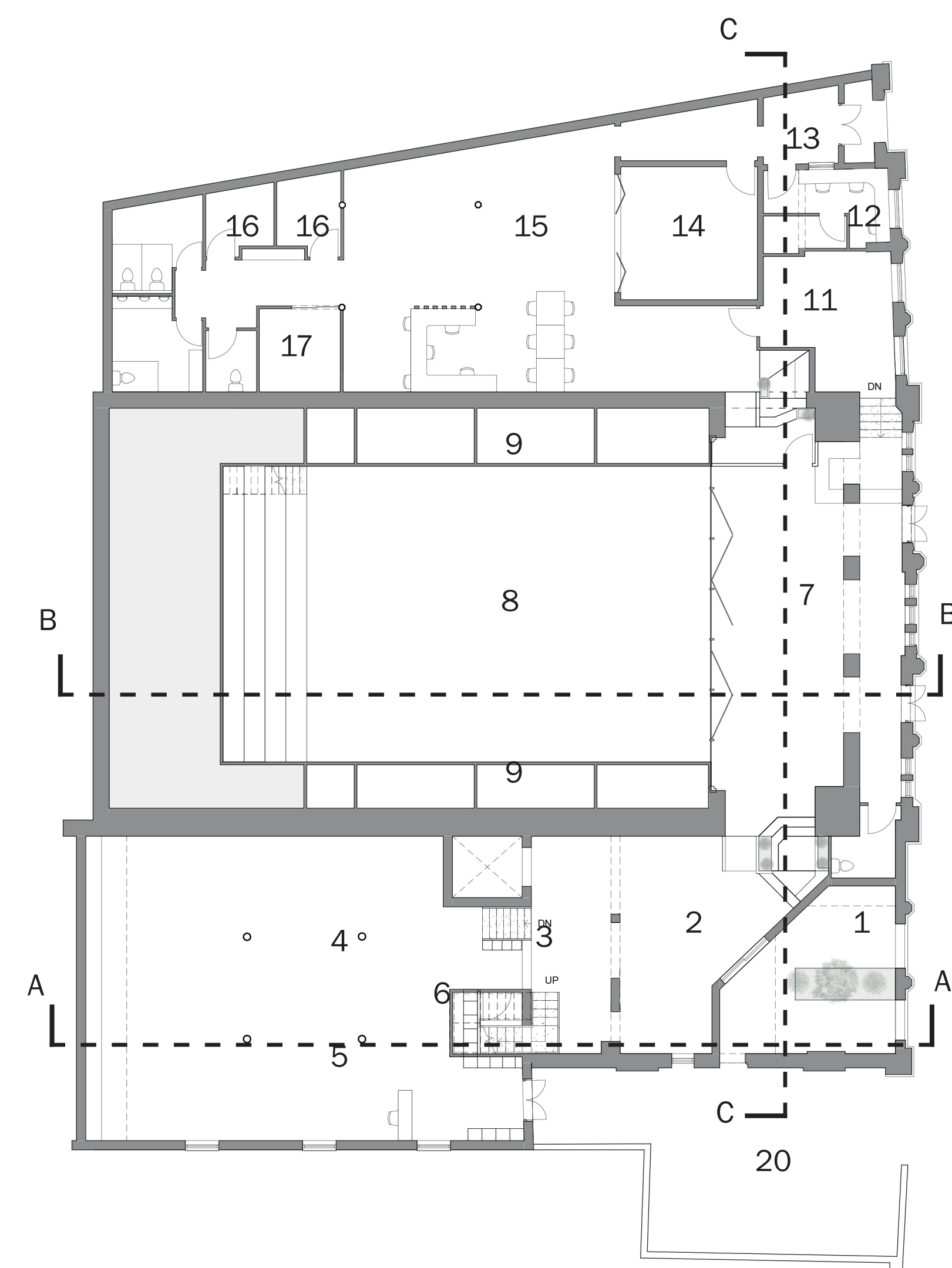
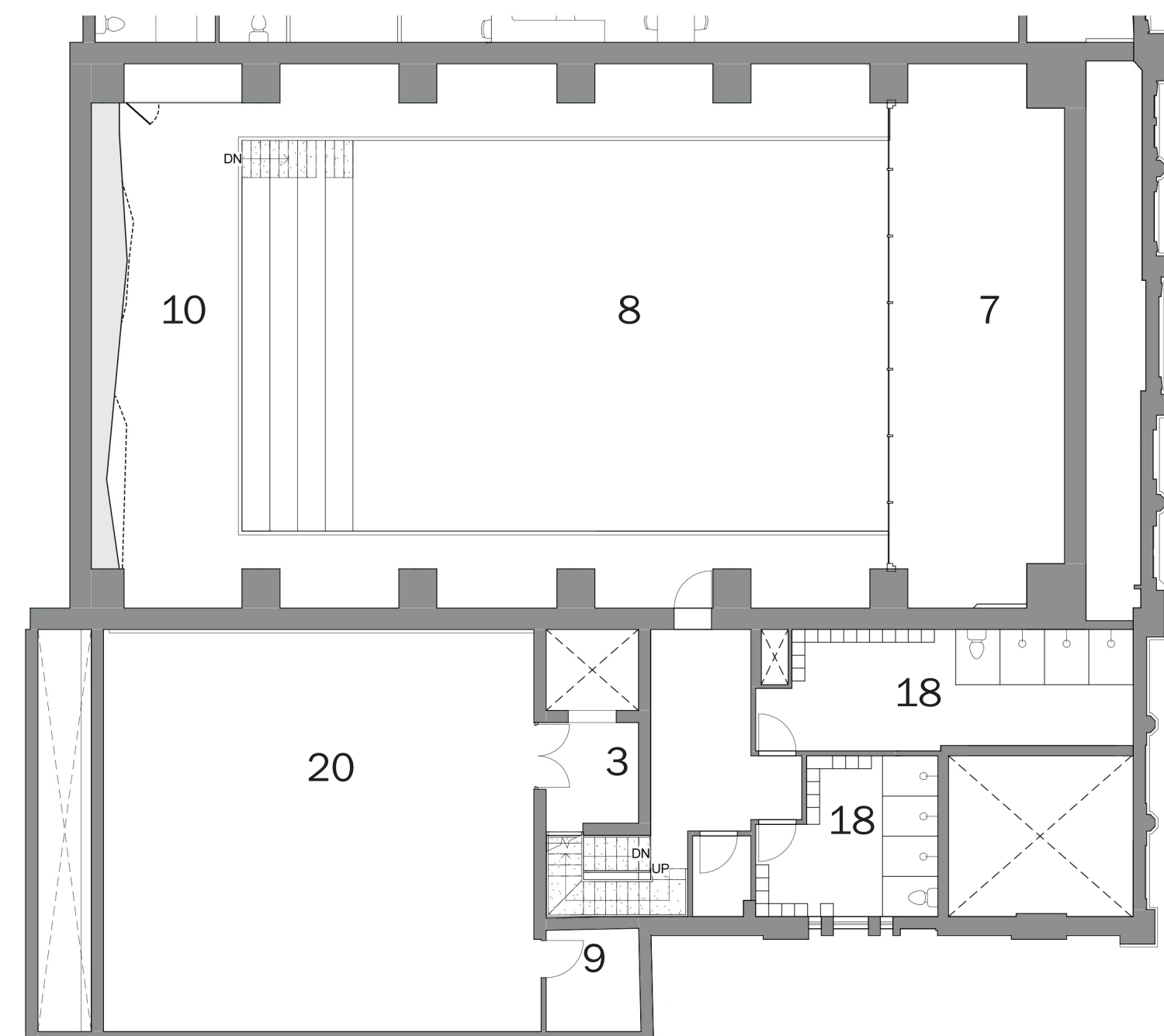
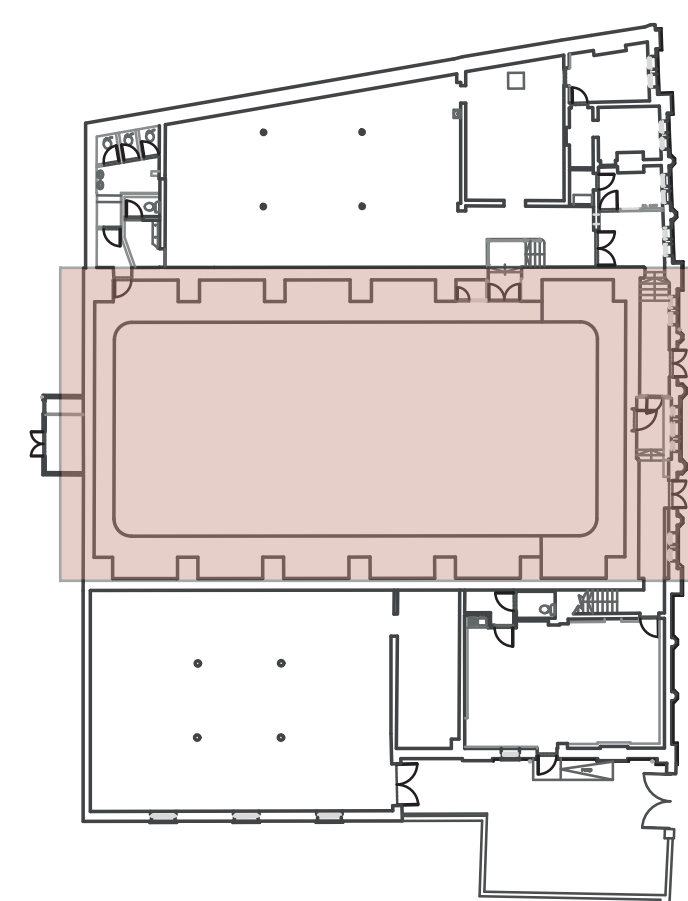
- Key**
- Very High
  - High
  - Medium
  - Low
  - Negligible
  - Unknown Potential

## Heritage Strategy

# The City Room

Anirudh Prabhakar

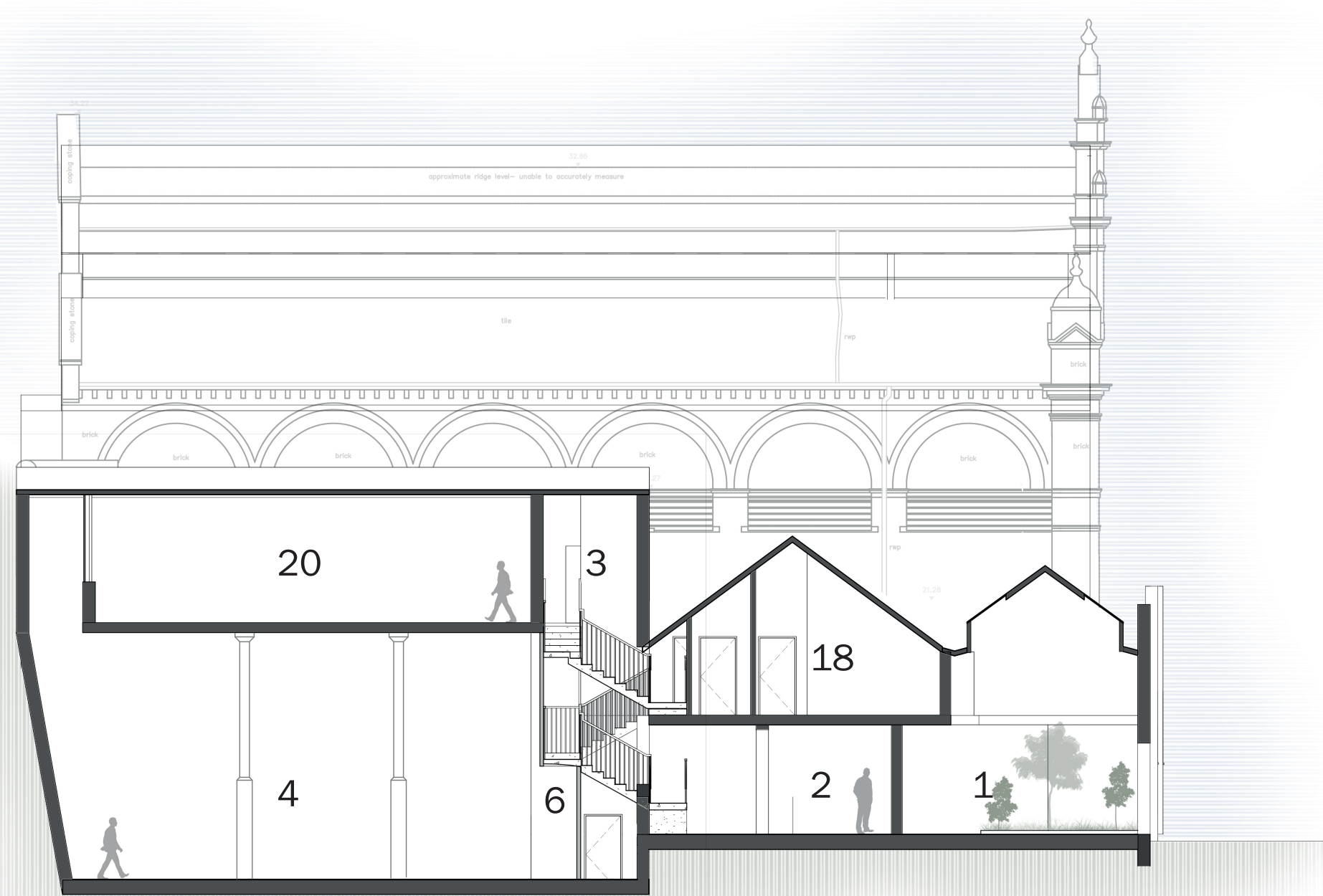
Jacobs Wells Baths is reimagined as a youth-centred community hub that balances energy with calm. The proposal keeps the historic pool hall legible as a civic interior, using atmosphere, light, sound, tactility and pacing, to support different users and tempos through the day. Active programmes and revenue-generating uses help sustain free youth learning, mentoring and wellbeing provision. Heritage fabric is treated as a readable layer, with key traces retained to maintain identity and memory



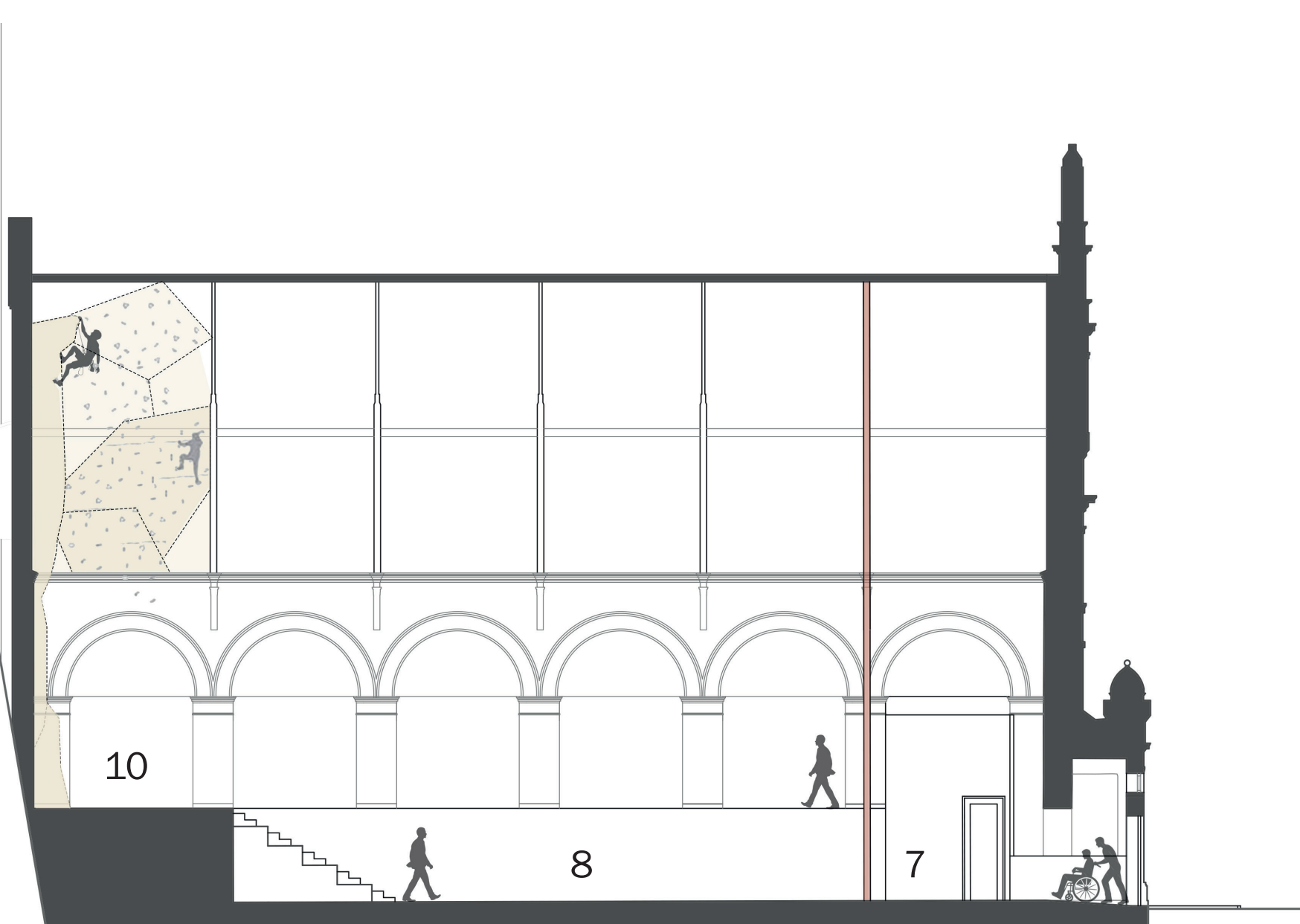
## Floor Plan

- |                              |                          |                     |                            |
|------------------------------|--------------------------|---------------------|----------------------------|
| 1. Winter Garden             | 7. Cafe                  | 13. Foyer           | 18. Changing Rooms         |
| 2. Reception                 | 8. Activity Space        | 14. Studio space    | 19. Performing arts studio |
| 3. Main Vertical Circulation | 9. Storage               | 15. Open work space | 20. Yard                   |
| 4. Gym                       | 10. Indoor Climbing Wall | 16. Breakout rooms  |                            |
| 5. Pilates                   | 11. Kitchen              | 17. Quiet Room      |                            |
| 6. W/c & Lockers             | 12. Staff                |                     |                            |

## Section A



## Section B



## Section C

