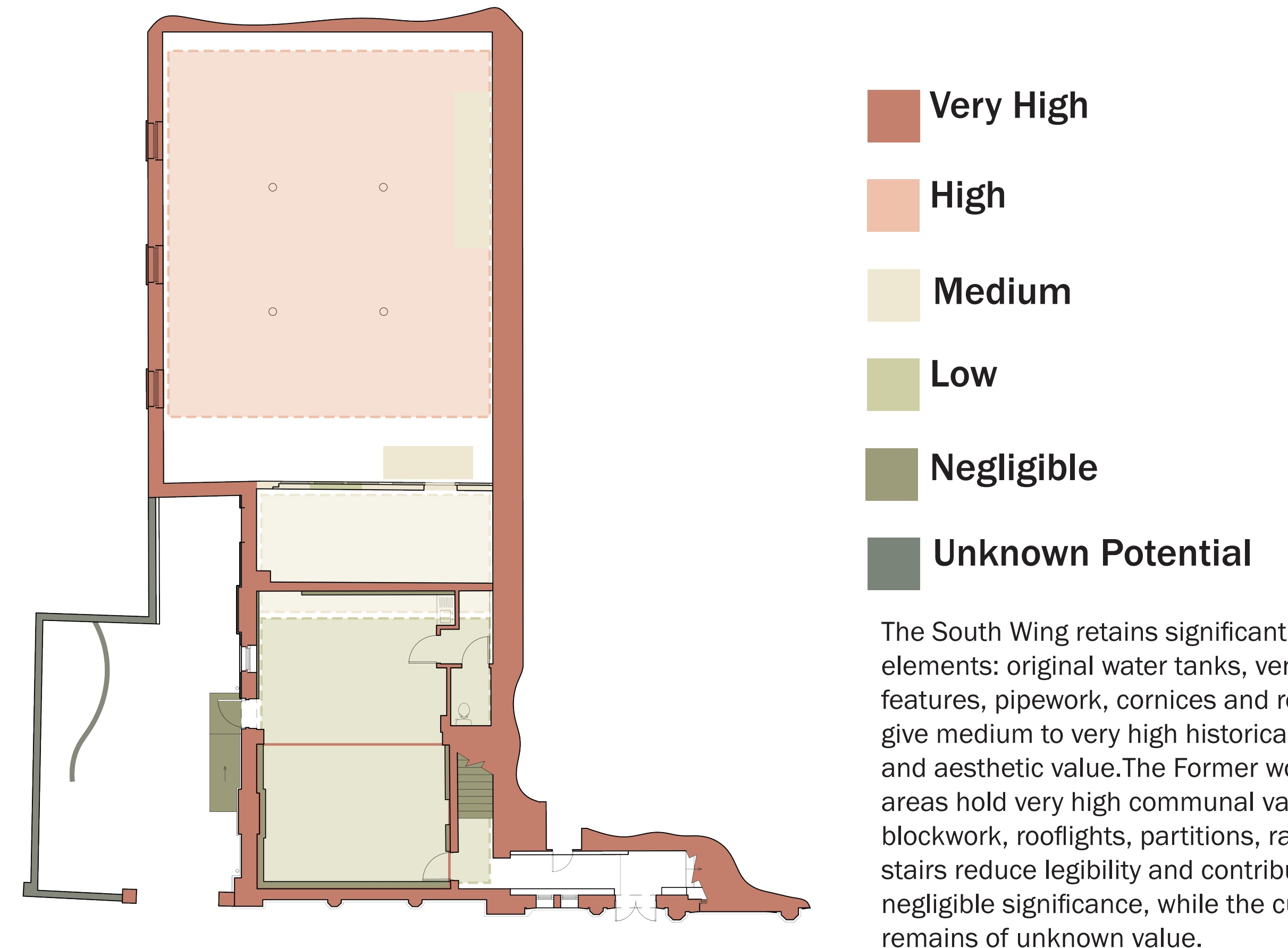


Access Strategy



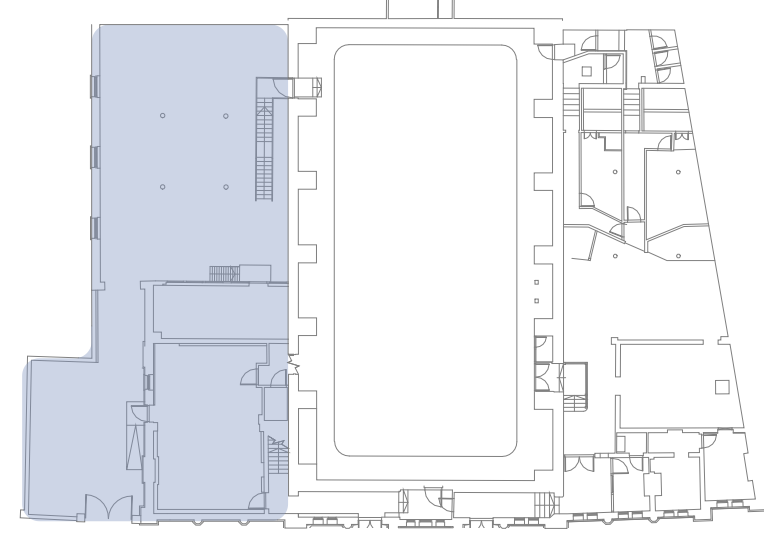
The South Wing retains significant heritage elements: original water tanks, ventilation features, pipework, cornices and roof trusses give medium to very high historical, evidential and aesthetic value. The Former women's bath areas hold very high communal value. Later blockwork, rooflights, partitions, ramps and stairs reduce legibility and contribute low to negligible significance, while the curved plinth remains of unknown value.

Creative Youth Commons

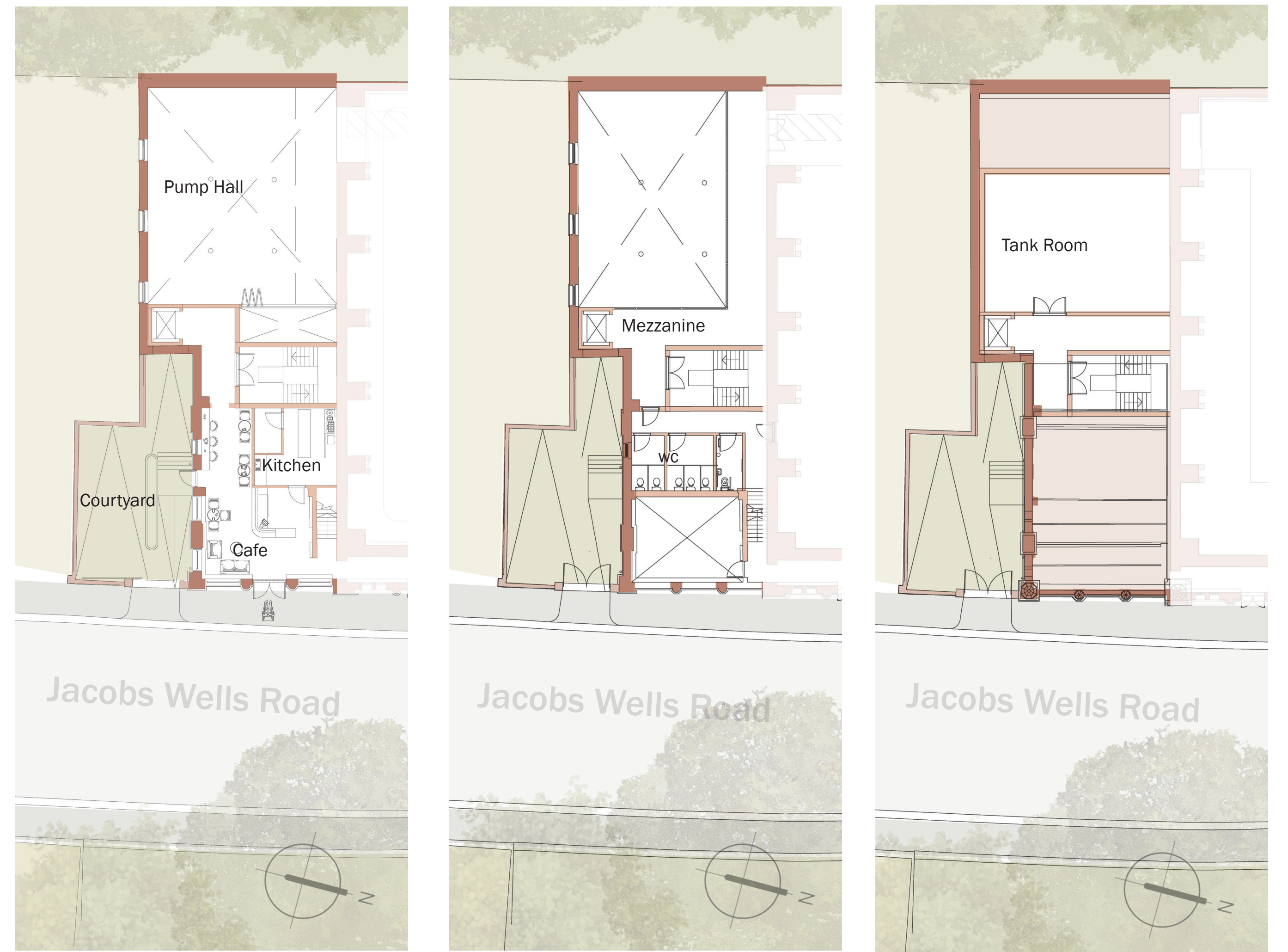
Zayanah Xoagus

The proposal reimagines Jacobs Wells Baths as a creative hub for the youth in Bristol. An open, accessible third space connecting Jacobs Wells and its wider creative network. Retaining the historic halls, it introduces flexible spaces for making, movement, and gathering. The project restores the building as vital civic infrastructure, enabling young people to participate, create, and shape a shared urban culture while breathing new life into the much-loved gem of Hotwells.

South Wing

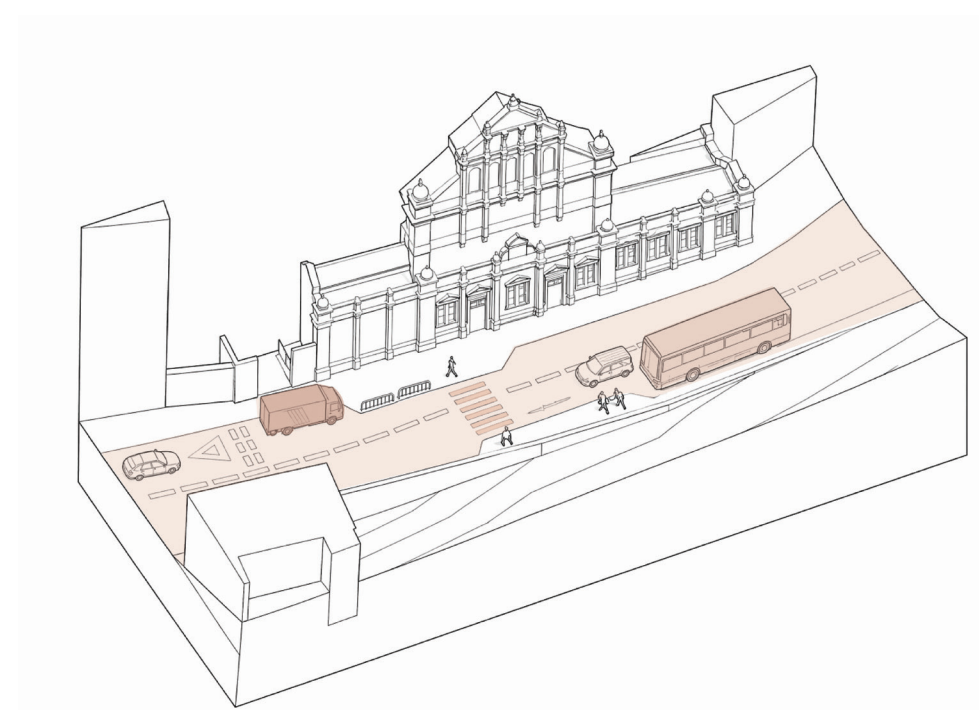


Heritage Strategy

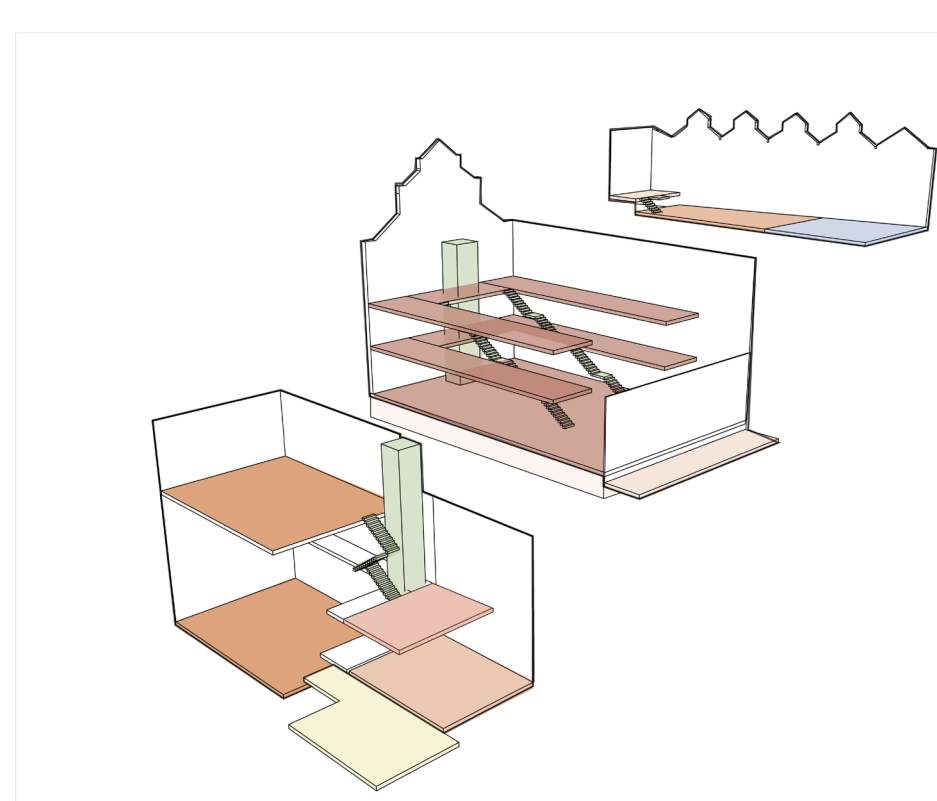


Ground Floor - South Studio First Floor - Main studio connection Second Floor - Tank level

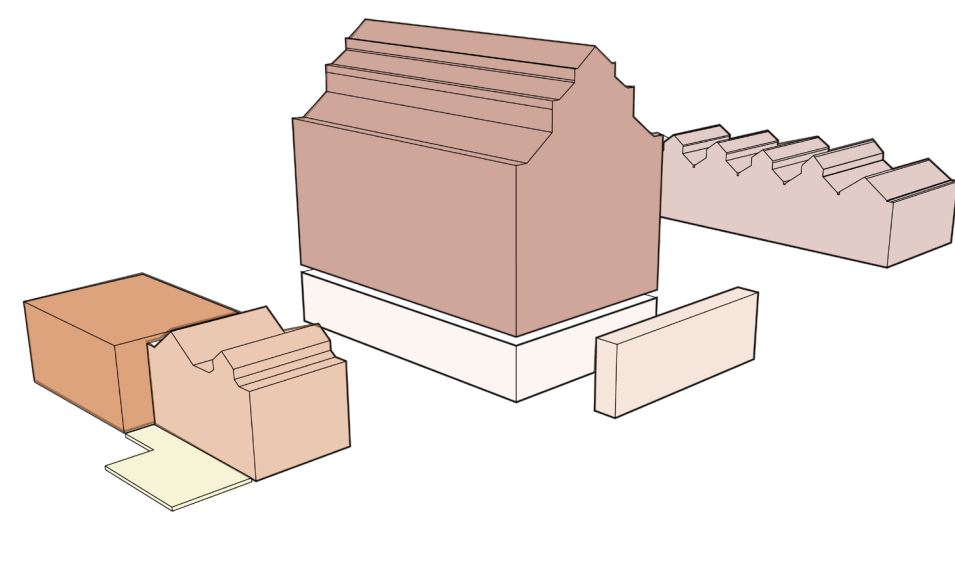
DIAGRAMS



Addressing access by improving crossing for pedestrians, slowing



Improving internal circulation, introducing



Zoning strategy and proposed alternative reception invites intrigue into the activities for the community to engage in.

Key

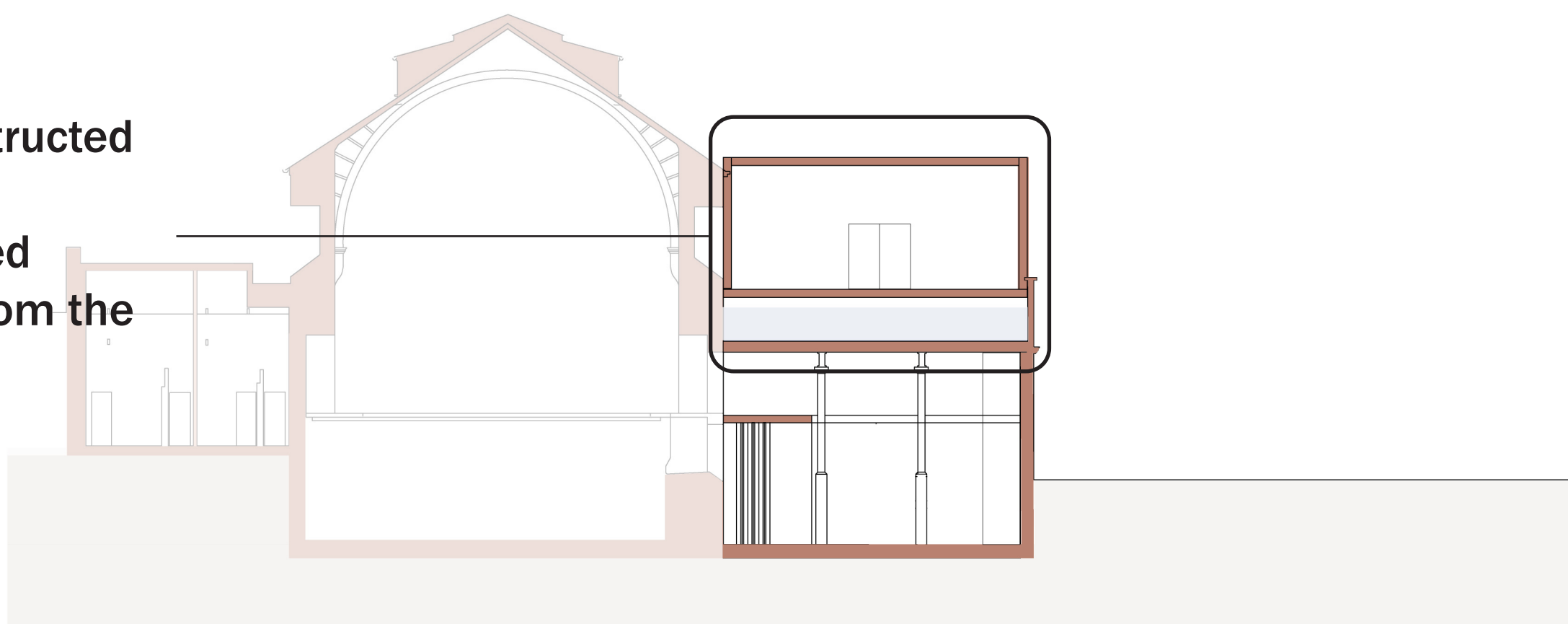
- Exiting walls
- Proposed additions

Floor Plans

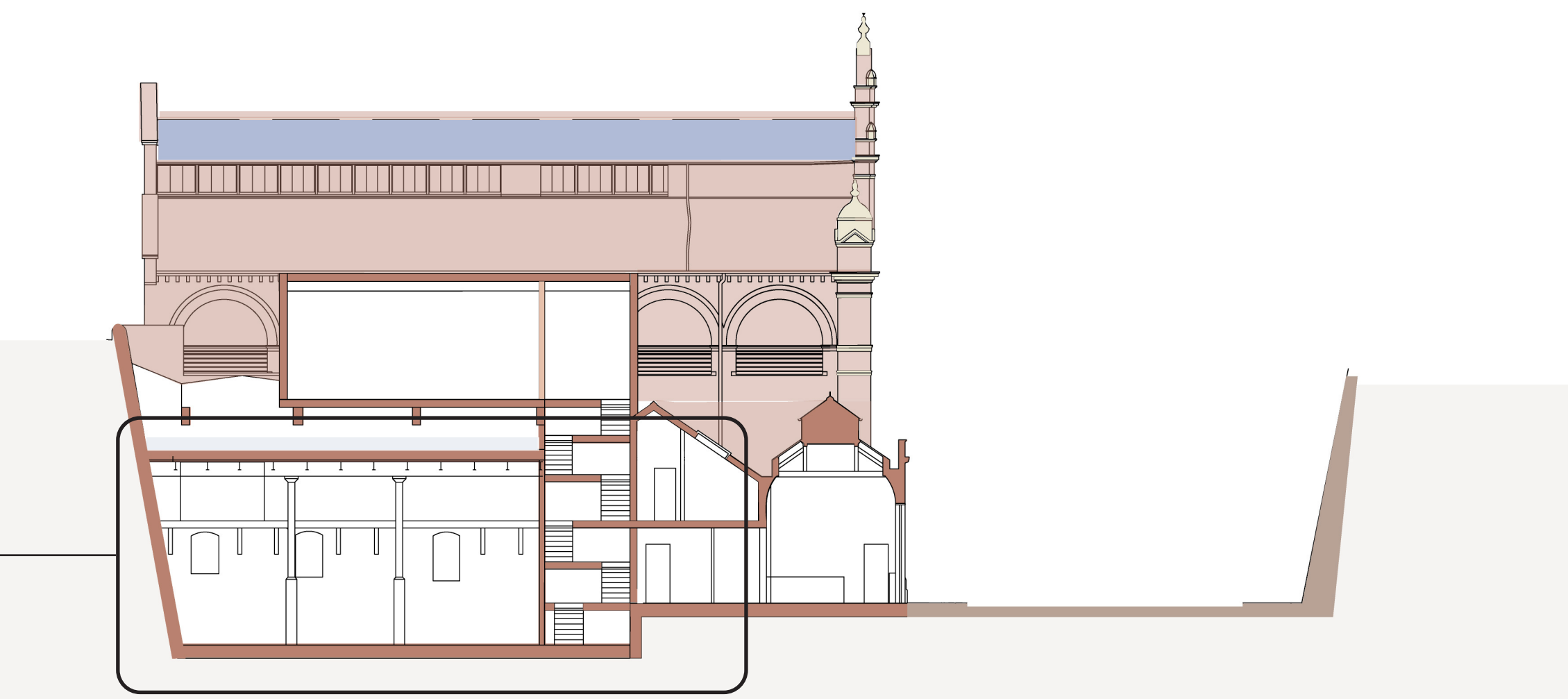
The new layout begins at the South Wing where a new cafe acts as a transitional space, removing subconscious barriers and allows pedestrians to wander into the building. The Pump room is converted into an exhibition hall where the underserved arts community can hire the space for exhibition (with accommodations made for film screening as well).

The first-floor mezzanine level connects the South Studio and Pump Room to the Main Studio. The second floor houses a new addition above the existing water tanks, expanding the variety of hireable event spaces. Existing tank will be refurbished and continue to provide spring water to Jacobs Wells Baths.

Roof terrace constructed over existing tanks providing continued access to water from the wells.



Pumproom converted into a flexible exhibition hall and event space



Elevation/ Section

Proposed massing of roof terrace

Alteration to facade allowing more visibility of activity



Addition of new door to provide a new fire escape route

Elevation/ Section